



June 30, 2017
The Mini Mac Distance Race
Waters of Lake Michigan, Chicago, IL

SAILING INSTRUCTIONS

Abbreviations

[SP] Rules for which a standard penalty may be applied by the race committee without a hearing or a discretionary penalty applied by the protest committee with a hearing.

[DP] Rules for which the penalties are at the discretion of the protest committee.

[NP] Rules that are not grounds for a protest or request for redress by a boat. This changes RRS 60.1(a)

1 RULES

The regatta will be governed by the rules as defined by The Racing Rules of Sailing.

2 NOTICE TO COMPETITORS

Notice to competitors will be posted on the Official Notice Board located at

https://www.yachtscoring.com/notice_board_summary.cfm

3 CHANGES TO THE SAILING INSTRUCTIONS

Any changes to the sailing instructions will be posted before 0800 on the day it will take effect, except that any changes to the schedule of races will be posted by 2000 on the day before it will take effect.

4 SIGNALS MADE ASHORE

4.1 Signals made ashore will be displayed from the Sheridan Shores flagpole.

4.2 When flag AP is displayed ashore, '1 minute is replaced with 'not less than 60 minutes' in the race signal AP.

5 SCHEDULE OF RACES

0800 - 0900	Check-In
0900	Competitors Meeting
1030	First Start
1500	On the Water Cut Off

6 CLASS FLAGS

Class flags will be flags bearing the class insignias.

7 THE COURSE

- 7.1 [NP] The course will be a distance race from Wilmette Harbor south towards a finish line northeast of the Belmont Harbor entrance. The course will be confined to a distance of two miles off shore, any boat which, at any time, sails east of two miles from shore will be scored DSQ without a hearing. Support boats will be used to guide the fleet throughout.
- 7.2 The Race Committee has the option to lay a mid course gate, which all competitors must pass through.
- 7.3 The course diagram is described in Addendum A.

8 THE START

- 8.1 The start will be run in accordance with Appendix U.
- 8.2 The starting line will be between a staff displaying an orange flag on the Race Committee vessel and the course side of the green mark.

9 THE FINISH

- 9.1 The finish line will be between a staff displaying an orange flag on the Race Committee vessel and the course side of a green mark located northeast of the Belmont Harbor entrance.

10 TIME LIMITS

- 10.1 Each boat shall have 90 minutes to finish after the first boat of its class crosses the finish line or the 1500 cut off time, boats finishing after the time limit will be scored DNF.

11 TRASH DISPOSAL [NP] [DP]

- 11.1 Trash may be placed aboard support or official boats. No trash shall be placed in the water.

12 SAFETY REGULATIONS AND CHECK-IN/CHECK-OUT

- 12.1 U.S. Coast Guard approved PFDs shall be worn by all competitors properly secured from the time a boat leaves the dock until she returns to the dock. This changes the Part 4 preamble and RRS 40.
- 12.2 Boats equipped with daggerboards shall tether them to the boat.
- 12.3 All competitors must carry a towline.
- 12.4 [NP] Competitors must check-out on land before leaving the dock and check-in immediately upon returning to land. Competitors failing to do so will receive a score of DSQ without hearing. Check in/out shall be done with event staff.
- 12.5 Before leaving the dock, each competitor must name one coach who will serve as the competitor's primary safety monitor on the water. Before leaving the dock, coaches will acknowledge and agree to the competitors for whom they are responsible.
- 12.6 When Code Flag L is displayed on the Race Committee vessel, competitors must check-in on the water.
- 12.7 A boat that withdraws from a race shall promptly notify the Race Committee.
- 12.8 Accepting hydration from support boats does not constitute as "outside assistance."

13 COACH AND SUPPORT BOATS

- 13.1 In addition to the definition of support boat in the RRS, all support persons will act as safety for all competitors first and foremost. The safety of competitors will be the priority for coaches regardless of club affiliation throughout the event.
- 13.2 Coach and support boats will be responsible for towing optis to Montrose Harbor and 420s/lasers to Belmont Harbor.
- 13.3 All coaches will monitor VHF channel 78 for safety and race management broadcasts.

14 PROTESTS AND REQUESTS FOR REDRESS

- 14.1 Protests forms will be available at both Chicago Yacht Club - Belmont and Chicago Corinthian Yacht

Club. Protests and requests for redress or reopenings shall be delivered there within the appropriate time limit.

- 14.2 For each class, the protest time limit will be 60 minutes after the race committee finish boat docks at Belmont Harbor. Dock time will be displayed at both Chicago Yacht Club - Belmont and Chicago Corinthian Yacht Club.
- 14.3 Notices will be posted no later than 30 minutes after the protest time limit to inform competitors of hearings in which they are parties or named a witness and where the hearing will be held.

15 FURTHER INFORMATION

Libbi Dust

Regatta Manager

Chicago Yacht Club

312-861-7777

regattamanager@chicagoyachtclub.org

Kevin Foote

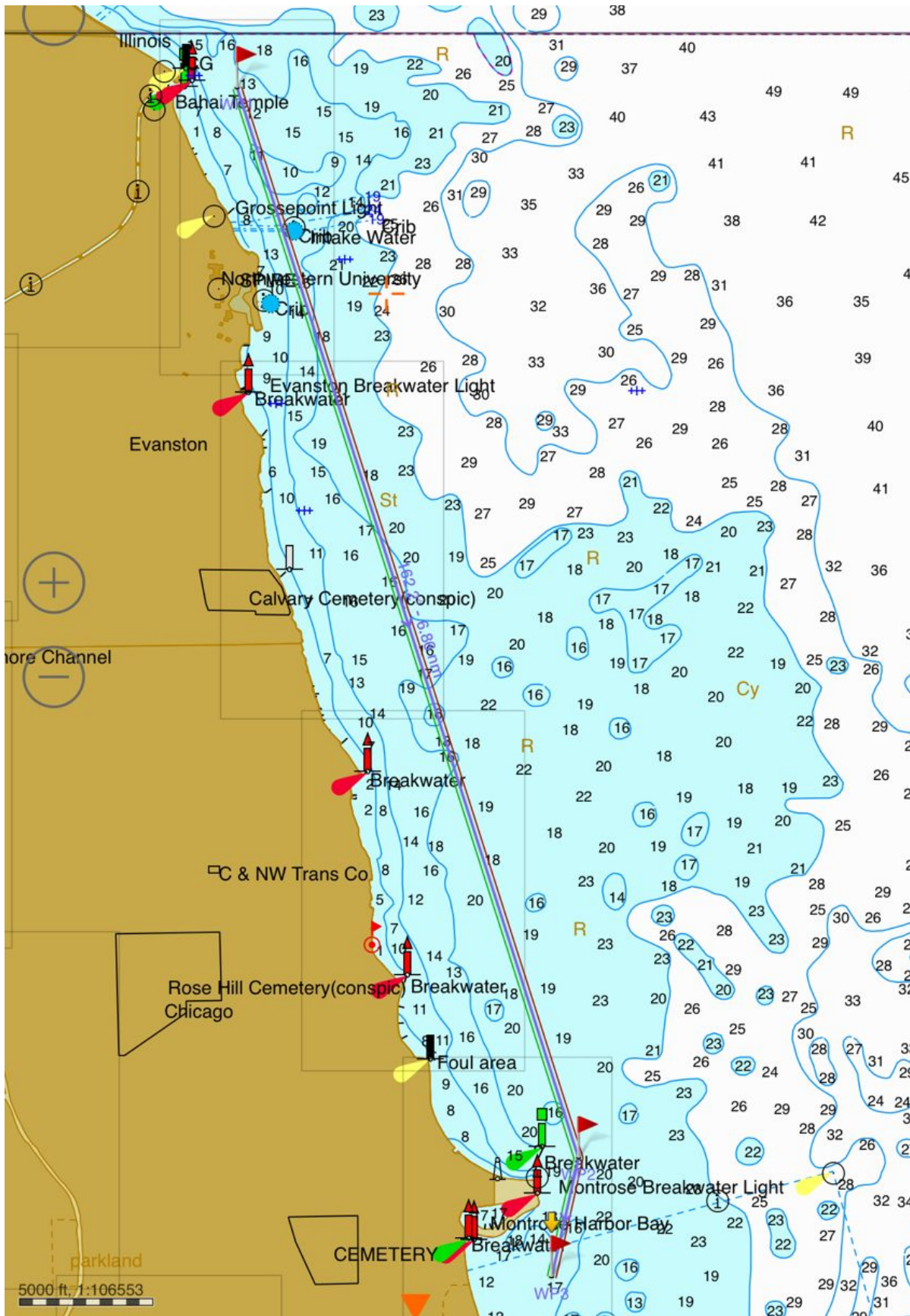
Regatta Chair

773-610-1849

dkfoote@gmail.com

ADDENDUM A

Course Map





420/Laser Circle

**Chicago Yacht Club
Belmont Station, Chicago, IL
July 1-2, 2017**

SAILING INSTRUCTIONS

Abbreviations

[SP] Rules for which a standard penalty may be applied by the race committee without a hearing or a discretionary penalty applied by the protest committee with a hearing.

[DP] Rules for which the penalties are at the discretion of the protest committee.

[NP] Rules that are not grounds for a protest or request for redress by a boat. This changes RRS 60.1(a)

1. RULES

The regatta will be governed by the rules as defined in *The Racing Rules of Sailing*.

2. NOTICES TO COMPETITORS

Notices to competitors will be posted on the official notice board located at https://www.yachtscoring.com/notice_board_summary.cfm.

3. CHANGES TO SAILING INSTRUCTIONS

Any change to the sailing instructions will be posted before 0900 on the day it will take effect, except that any change to the schedule of races will be posted by the End of Protest Time on the day before it will take effect.

4. SIGNALS MADE ASHORE

4.1 Signals made ashore will be displayed at flagpole at the east end of Chicago Yacht Club Belmont Station.

4.2 When flag AP is displayed ashore, '1 minute' is replaced with 'not less than 30 minutes' in the race signal AP.

12. THE FINISH

- 13.1 The finish line for courses that finish boats on the starboard side of a race committee boat will be between a staff displaying a blue flag on a race committee boat and the course side of the finishing mark.
- 13.2 The finish line for courses that finish boats on the port side of a race committee boat (upwind finish) will be between a staff displaying an blue flag on a race committee boat and the course side of the weather mark.

13. PENALTY SYSTEM

Rule 44.1 is changed so that the Two-Turns Penalty is replaced by the One-Turn Penalty.

14. TIME LIMITS AND TARGET TIMES

- 14.1 The time limit shall be 40 minutes for all classes.
- 14.2 Boats failing to finish within 15 minutes after the first boat sails the course and finishes shall be scored DNF.

15. PROTESTS AND REQUESTS FOR REDRESS

The time limit for protests and requests for redress is 30 minutes after the docking time of the race committee signal boat for the session in which the incident occurred.

16. SCORING

- 16.1 One (1) race for each division shall constitute a regatta for that division.
- 16.2 If 5 or more races are completed, a boat's score shall be the total of her race scores excluding her worst.
- 16.3 All boats will be scored using sail numbers only.

17. SAFETY REGULATIONS

- 17.1 U.S. Coast Guard approved PFDs shall be worn by all competitors properly secured from the time a boat leaves the dock until she returns to the dock. This changes the Part 4 preamble and RRS 40.
- 17.2 Boats equipped with daggerboards shall tether them to the boat.
- 17.3 Competitors must check-out on land before leaving the dock and check-in immediately upon returning to land. Competitors failing to do so will receive a score of DSQ without hearing. Check in/out shall be done with event staff.
- 17.4 When Code Flag L is displayed on the Race Committee vessel, competitors must check-in on the water.
- 17.5 A boat that withdraws from a race shall promptly notify the Race Committee.
- 17.6 Accepting hydration from support boats does not constitute as "outside assistance."

18. SUPPORT BOATS

- 18.1 **[DP]** Team leaders, coaches and other support personnel shall stay outside areas where boats are racing from the time of the preparatory signal for the first class to start until all boats have finished or retired or the race committee signals a postponement, general recall or abandonment.
- 18.2 **[NP][DP][SP]** Each coach/support boat is required to carry a VHF radio capable of transmitting and

5. SCHEDULE OF RACES

Saturday, July 1

0730 - 0900	Check-In
0900	Competitor Meeting
1055	First Warning. Races will continue throughout the day.
1800 - 2000	Barbeque at Belmont

Sunday, July 2

0900	Competitor Meeting
1055	First Warning. Races will continue throughout the day.
1400	No race will start after this time.
After Racing	Awards

6. CLASS FLAGS

Class flags will be flags bearing the class insignias.

7. RACING AREAS

The racing area is located in Lake Michigan east of the Belmont Harbor entrance.

8. THE COURSES

The diagrams in Addendum A show the courses, including the approximate angles between legs, the order in which marks are to be passed, and the side on which each mark is to be left.

9. MARKS

The marks will be inflatable marks of various shapes and colors.

10. THE START

- 11.1 Races will be started using Appendix U, Sound-Signal Starting System. The starting order will be announced on the water.
- 11.2 The starting line will be between a staff displaying an orange flag on the signal boat at the starboard end and the course side of the port-end starting mark.
- 11.3 A boat whose warning signal has not been made shall keep clear of the starting area, defined as the area extending approximately 50 feet to windward, leeward, and either end of the starting line.

11. CHANGE OF THE NEXT LEG OF THE COURSE

- 12.1 To change the next leg of the course, the race committee will lay a new mark (or move the finishing line) and remove the original mark as soon as practicable. When in a subsequent change a new mark is replaced, it will be replaced by an original mark.
- 12.2 Offset marks will not be set on a changed leg of the course.
- 12.3 The race committee may change the course by five degrees or less without signaling. The changed leg change will continue to use the active mark. This changes rule 33(a).

receiving all international ship-to-ship channels.

19. TRASH DISPOSAL [NP] [DP]

Trash may be placed aboard support or official boats. No trash shall be placed in the water.

20. HAUL-OUT RESTRICTIONS

- 20.1 Competitors for this event may store their boats at no charge at Chicago Yacht Club Belmont Station on the south lawn or in the patio. A boat stored on the premises of Belmont Station for this event shall have an identifying tag attached to its dolly prior to the first day of racing. Any boat without an identifying tag will be removed from the premises.
- 20.2 All boats shall be removed no later than the end of day on **Sunday, July 2, 2017**, unless otherwise arranged with Chicago Yacht Club.

21. PRIZES

- 21.1 Prizes will be awarded for the top three finishers in the Club 420, 420 Jib & Main, and Laser Radial.
- 21.2 Sailing Program Challenge. The regatta will score a sailing program challenge (“Challenge”). Any yacht club or sailing program represented by five (5) or more registered entries is automatically eligible and entered in the Challenge and their competing boats will be assigned points equal to their placement in their respective classes. These scores will be combined and an overall winning program will be calculated.
- 21.3 Regatta Overall Winner. Prizes will be awarded to the three (3) competitors with the lowest average scores, regardless of class. Please note this calculation will include scores from Chicago Junior Race Week Mini-Mac race. In order to be eligible for the overall winner prize, a competitor must also enter that race. See NOR Chicago Junior Race Week Mini-Mac for information specific to that race.

22. DISCLAIMER OF LIABILITY

Competitors participate in the regatta entirely at their own risk. See rule 4, Decision to Race. The organizing authority will not accept any liability for material damage or personal injury or death sustained in conjunction with or prior to, during, or after the regatta.

30. FURTHER INFORMATION

Libbi Dust
Regatta Manager
Chicago Yacht Club
312-861-7777
regattamanager@chicagoyachtclub.org

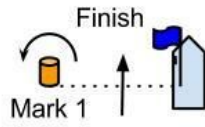
Kevin Foote
Regatta Chair
773-610-1849
dkfoote@gmail.com

ADDENDUM A

Courses

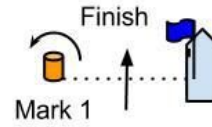
W/L Course

Start - 1 - 2 - 1 - Finish (W + 4)
Start - 1 - 2 - 1 - 2 - Finish (W + 5)
Start - 1 - 2 - 1 - 2 - 1 - Finish (W + 6)

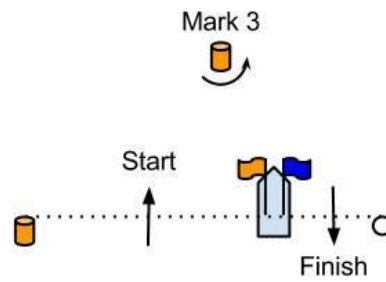
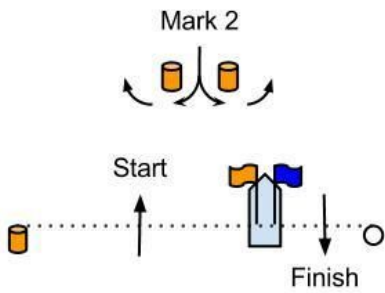


Modified Olympic Course

Start - 1 - 2 - 3 - 1 - Finish (Triangle - WL)
Start - 1 - 2 - 3 - 1 - 3 - 1 - Finish (Triangle - WLWL)



(Mark 2





Gold/Silver Optimist Circle

**Chicago Corinthian Yacht Club
Montrose Harbor, Chicago, IL
July 1-2, 2017**

SAILING INSTRUCTIONS

Abbreviations

[SP] Rules for which a standard penalty may be applied by the race committee without a hearing or a discretionary penalty applied by the protest committee with a hearing.

[DP] Rules for which the penalties are at the discretion of the protest committee.

[NP] Rules that are not grounds for a protest or request for redress by a boat. This changes RRS 60.1(a)

1. RULES

- 1.1 The regatta will be governed by the rules as defined in *The Racing Rules of Sailing*.
- 1.2 The prescriptions of US Sailing will apply
- 1.3 The prescriptions of the IODA will apply

2. NOTICES TO COMPETITORS

Notices to competitors will be posted on the official notice board located on the west window of the CCYC Club house and at https://www.yachtscoring.com/notice_board_summary.cfm.

3. CHANGES TO THE SAILING INSTRUCTIONS

Any change to the sailing instructions will be posted before 0900 on the day it will take effect, except that any change to the schedule of races will be posted by the End of Protest Time on the day before it will take effect.

4. SIGNALS MADE ASHORE

- 4.1 Signals made ashore will be displayed at the flagpole in the front lawn.
- 4.2 When flag AP is displayed ashore, '1 minute' is replaced with 'not less than 45 minutes' in the race signal AP.

5. FORMAT OF RACING

- 5.1 The regatta will consist of a qualifying series followed by a final series.

- 5.2 The qualifying series will consist of a minimum of 1 race and a maximum of 3. All entrants will compete in a single fleet. The qualifying series will take place on the first day of sailing.
- 5.3. Final series:
- A. The final series will consist of a maximum of 3 races
 - B. The final series will take place on the second day of racing
 - C. There will be no final series if a qualifying series can not be sailed.
 - D. If the qualifying series is not completed on Day 1, it will be sailed on Day 2. The winners of Day 2 will be awarded the Gold Fleet prizes and the top sailors of the bottom half (as defined in 5.3E) will be awarded the Silver Fleet awards for the races sailed on Day 2
 - E. Boats will be assigned to the Gold and Silver Fleets on the basis of their ranks in the qualifying series. The Gold fleet will have 50% of the number of boats registered, rounded up, subject only to SI 5.3(E). Boats with the best qualifying series ranks will race all final series races in the Gold Fleet.
 - F. Any recalculation of the qualifying series ranking after the boats have been assigned to final series fleets will not affect the assignments, save that a redress decision may promote a boat to a higher fleet.
 - G. **[DP] [NP]** For the final series boats will display a yellow ribbon (gold fleet) or blue ribbon (silver fleet) as per their fleet assignment permanently fixed and free to fly from the top of the sprit. The ribbons will be provided by the organising authority.

6. SCHEDULE OF RACES

Saturday, July 1

0730 - 0900	Check-In
0900	Competitor Meeting
1055	First Warning. Races will continue throughout the day.
1800 - 2000	Barbeque at Belmont

Sunday, July 2

0900	Competitor Meeting
1055	First Warning. Races will continue throughout the day.
1400	No race will start after this time.
After Racing	Awards

- 6.2 To alert boats that a race or sequence of races will begin soon, the orange starting line flag will be displayed with one sound at least five minutes before a warning signal is made.
- 6.3 On the last scheduled day of racing no races will start after 1400.

7. CLASS FLAGS

- 7.1 The qualifying series will be sailed under the Optimist class flag.
- 7.2. The final series will be sailed under the Optimist class flag plus a yellow flag for the gold fleet or a blue flag for the silver fleet.

8. RACING AREAS

Addendum A shows the location of racing area.

9. THE COURSE

- 9.1. The diagram in Addendum B shows the course, including the approximate angles between legs, the order in which marks are to be passed, and the side on which each mark is to be left.

- 9.2. Courses will not be shortened. This changes RRS 32.
9.3. Legs of the course will not be changed after the preparatory signal. This changes RRS 33.

10. MARKS

- 10.1 Marks 1, 2, 3S and 3P will be orange inflatable buoys.
10.2 The starting marks will be a race committee boat at the starboard end and a race committee boat or an inflatable buoy at the port end.
10.3 The finishing marks will be a race committee boat at the starboard end and a (colour) inflatable buoy at the port end.

11. THE START

- 11.1 Races will be started by using RRS 26 with the warning signal made 5 minutes before the starting signal.
11.2 The starting line will be between a staff displaying an orange flag on the starting boat at the starboard end and the course side of the port-end starting mark.
11.3 [NP][DP] Boats whose warning signal has not been made shall avoid the starting area during the starting sequence for other races.
11.4 A boat that does not start within 4 minutes after her starting signal will be scored DNS without a hearing. This changes RRS A4 and A5.

12. THE FINISH

- 12.1 The finishing line will be between a staff displaying an orange flag on the finishing boat at the starboard end and the course side of the port-end finishing mark.

13. TIME LIMITS AND TARGET TIMES

- 13.1 Time limits and target times are as follows:

<u>Time Limit</u>	<u>Mark 1 Time Limit</u>
60 min	25 min

If no boat has passed Mark 1 within the Mark 1 time limit, the race will be abandoned. Failure to meet the target time will not be grounds for redress. This changes RRS 62.1(a).

- 13.2 Boats failing to finish within 20 after the first boat sails the course and finishes will be scored Did Not Finish without a hearing. This changes RRS 35, A4 and A5

14. PROTESTS AND REQUESTS FOR REDRESS

- 14.1 Protest forms are available at the race office. Protests and requests for redress or reopening shall be delivered there within the appropriate time limit.
14.2 For each class, the protest time limit is 90 minutes after the last boat has finished the last race of the day or the race committee signals no more racing today, whichever is later.
14.3 A list of protests received will be posted on the notice board. Hearings will be held as soon as possible after racing at Chicago Corinthian Yacht Club building.
14.4 On the last scheduled day of racing, a request for reopening a hearing shall be delivered:
(a) within the protest time limit if the requesting party was informed of the decision on the previous day;
(b) no later than 30 minutes after the requesting party was informed of the decision on that day.

This changes RRS 66.

14.5 On the last scheduled day of racing, a request for redress based on a protest committee decision shall be delivered no later than 30 minutes after the decision was posted. This changes RRS 62.2.

15. SCORING

15.1 The Low Points scoring system of RRS Appendix A will apply.

15.2 Three races are required to be completed to constitute a regatta.

15.3 When fewer than five races have been completed, a boat's series score will be the total of her race scores.

15.4 When five or more races have been completed, a boat's series score will be the total of her race scores excluding her worst score.

15.5 To request correction of an alleged error in posted race or series results, a boat may complete a scoring enquiry form available at the race office.

16. SAFETY REGULATIONS AND CHECK IN/CHECK OUT [SP] [NP] [DP]

16.1 U.S. Coast Guard approved PFDs shall be worn by all competitors properly secured from the time a boat leaves the dock until she returns to the dock. This changes the Part 4 preamble and RRS 40.

16.2 Boats equipped with daggerboards shall tether them to the boat.

16.3 All competitors must carry a towline.

16.4 Competitors must check out on land before leaving the dock and check in immediately upon returning to land. Failure to observe the Check In/Check Out procedures on any day may result in a 20% penalty of that boat's score in the last race of that day but she shall not be scored greater than a DNF. Check-in and check out must be done with the designated event staff.

16.5 When Code Flag L is displayed on the Race Committee vessel, competitors must check-in on the water.

16.6 A boat that retires from a race shall notify the race committee as soon as possible.

16.7 Competitors who require assistance should blow a whistle or wave a paddle or one arm. The race committee reserves the right to assist competitors who in its opinion require assistance, regardless of the wishes of the competitor. This will not be ground for redress. This changes RRS 62.1(a).

16.8 No boat, whether racing or not, shall leave the vicinity of the racing area unless given permission to do so from the race officer.

16.9 When a race is abandoned, all boats shall return to the dock immediately if directed to do so by the race committee or a safety boat.

17. REPLACEMENT OF CREW OR EQUIPMENT

17.1 Substitution of damaged or lost equipment will not be allowed unless authorized by the race committee. Requests for substitution shall be made to the race committee at the first reasonable opportunity.

18. EQUIPMENT AND MEASUREMENT CHECKS

[DP] [SP] A boat or equipment may be inspected at any time for compliance with the class rules and SIs. On the water, a boat may be instructed by a race committee equipment inspector or measurer to proceed immediately to a designated area for inspection

19. EVENT ADVERTISING

[DP] Boats shall display event advertising if supplied by the organizing authority. If this rule is broken, World Sailing Regulation 20.9.2 applies.

20. SUPPORT BOATS

- 20.1 **[DP]** Team leaders, coaches and other support persons shall stay outside areas where boats are racing from the time of the preparatory signal for the first class to start until all boats have finished or retired or the race committee signals a postponement, general recall or abandonment.
- 20.2 **[NP][DP][SP]** Each coach/support boat is required to carry a VHF radio capable of transmitting and receiving all international ship-to-ship channels.

21. TRASH DISPOSAL [NP][DP]

Trash may be placed aboard support or official boats. Trash shall not be discarded into the water.

22. PRIZES

- 22.1 Prizes will be awarded for the top three finishers.
- 22.2 Sailing Program Challenge. The regatta will score a sailing program challenge (“Challenge”). Any yacht club or sailing program represented by five (5) or more registered entries is automatically eligible and entered in the Challenge and their competing boats will be assigned points equal to their placement in their respective classes. These scores will be combined and an overall winning program will be calculated.
- 22.3 Regatta Overall Winner. Prizes will be awarded to the three (3) competitors with the lowest average scores, regardless of class. Please note this calculation will include scores from Chicago Junior Race Week Mini-Mac race. In order to be eligible for the overall winner prize, a competitor must also enter that race. See NOR Chicago Junior Race Week Mini-Mac for information specific to that race.

23. DISCLAIMER OF LIABILITY

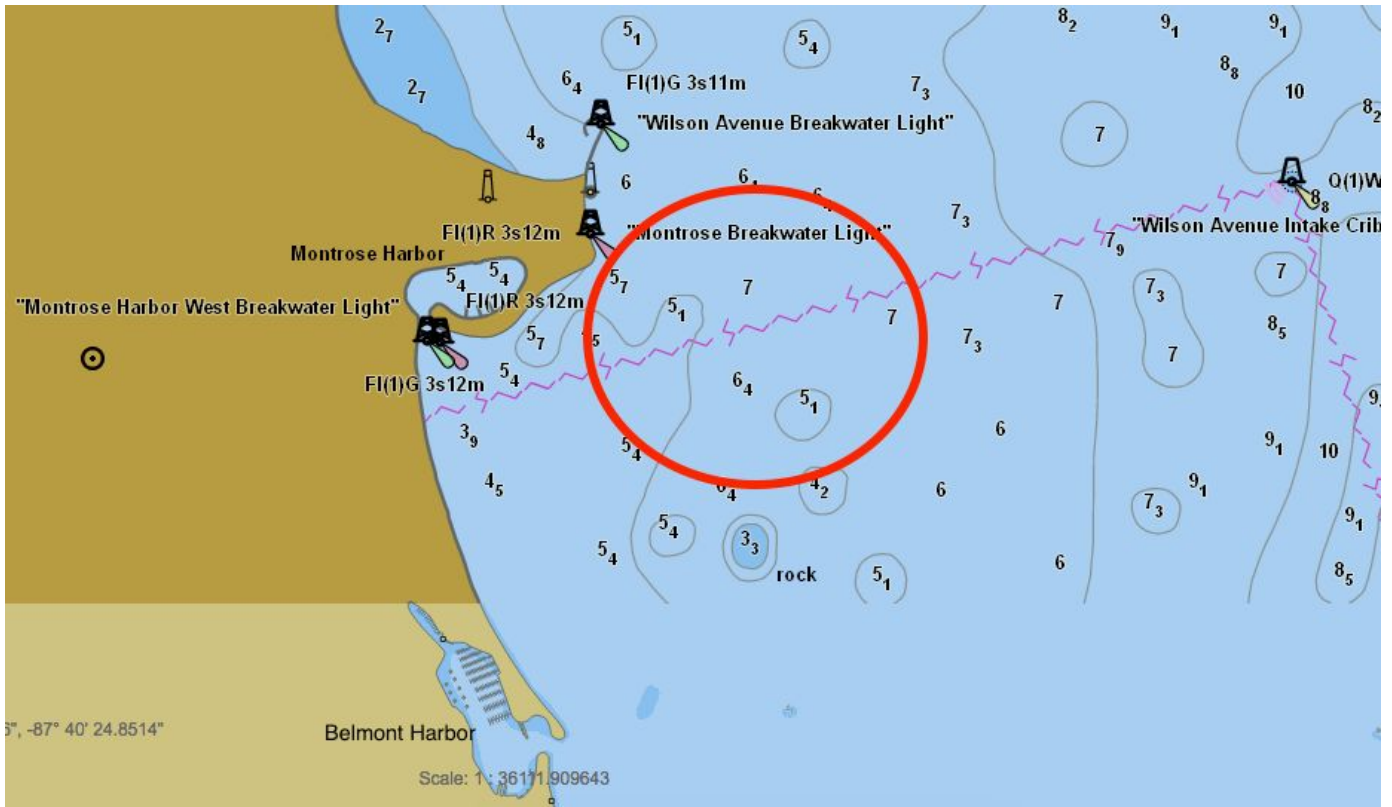
Competitors participate in the regatta entirely at their own risk. See RRS 4, Decision to Race. The organizing authority will not accept any liability for material damage or personal injury or death sustained in conjunction with or prior to, during, or after the regatta.

24. INSURANCE.[NP][DP][SP]

Each participating boat shall be insured with valid third-party liability insurance with a racing cover considered by their parent or guardian as adequate for the risks involved.

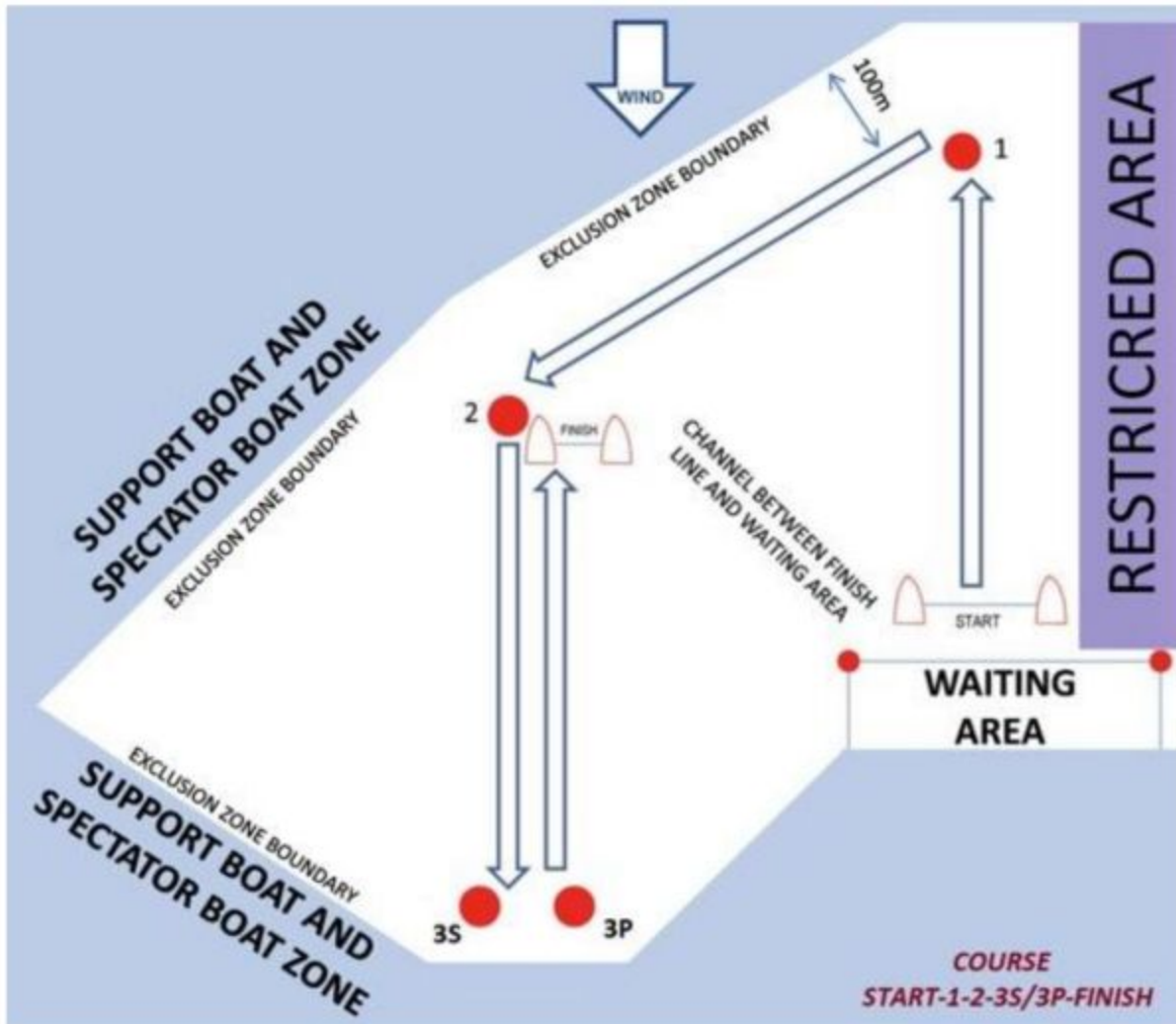
ADDENDUM A

Racing Area



ADDENDUM B

Courses





CHICAGO JUNIOR RACE WEEK 2017

July 1-2, 2017

BEGINNER RACER SAILING INSTRUCTIONS

Hosted by Jackson Park Yacht Club

The Beginner Racer Fleet (Green Fleet) is a teaching and introductory fleet for novice sailors. The Rules of Sailing are important and taught, but learning to race while having fun is equally stressed. These sailing instructions are structured within The Racing Rules of Sailing to provide a flexible, less structured and less formal racing environment. Green Fleet is not scored. All participants receive participation awards. While race placement and progress may be tracked, who places first is less important than learning, improving, and having fun along the way.

1 RULES

1.1 The regatta will be governed by the rules as defined in The Racing Rules of Sailing.

2 NOTICES TO COMPETITORS

Notices to competitors will be posted on the official Green Fleet notice board located at the bottom of the stairs ("Fleet Notice Board") in the Jackson Park Club ("JPYC") clubhouse, and on Yacht Scoring

3 CHANGES TO THE SAILING INSTRUCTIONS

3.1 Any change to the sailing instructions will be posted on the official Green Fleet notice board and/or announced at the Green Fleet Competitors Meeting.

3.2 The race committee may change the sailing instructions on the water with one long sound and hailing the change by loud hailer or hail.

4 SIGNALS MADE ASHORE

4.1 Signals made ashore will be displayed on the JPYC flagpole located in front of the JPYC clubhouse.

4.2 When flag AP is displayed ashore, '1 minute' is replaced with 'not less than 30 minutes' in race signal AP.

5 SCHEDULE OF RACING

Green Fleet sails an informal schedule. A Green Fleet Competitors Meeting will take place 9:00 am each day, under the veranda at JPYC clubhouse. At this meeting, the Green Fleet PRO will announce the plan for the day. The 1st warning will be at 10:55 am each day. This information will be posted on the notice board. The schedule may change based on conditions and the requirements of the sailors.

6 CLASS FLAG

The class flag will be a green flag.

7 RACING AREA

The racing area will be announced at the Green Fleet Competitors meeting. This may change each day based on conditions.

8 THE COURSES

The courses may be windward/leeward, triangles or other courses as described by the PRO at each day's Competitors Meeting. On the water, the course will be posted on a white board on the Signal Boat and hailed by the race committee.

9 MARKS

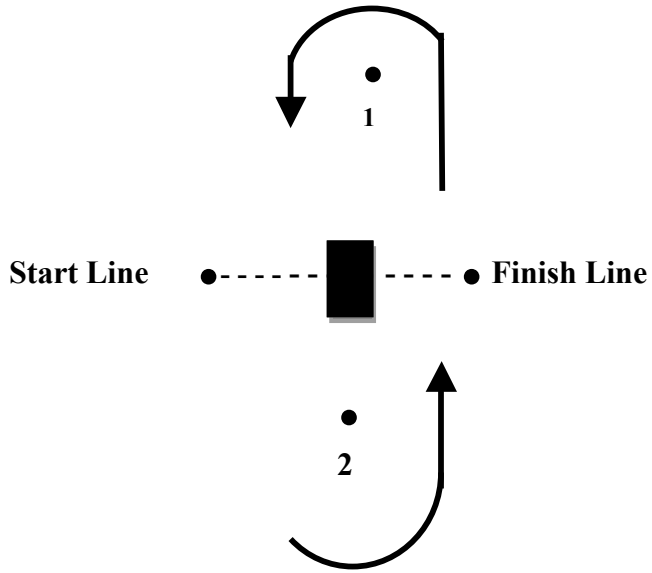
Marks will be orange, white or red balls.

10 THE START AND FINISH

10.1 Races will be started with sounds according to Appendix U (3 minute sequence). The race committee may verbally hail the countdown.

- 10.2 The start line will be between a staff on the signal boat displaying an orange flag and the orange ball.
The finish line will be between a staff on the signal boat displaying a blue flag and the white ball.
- 10.3 The start-finish line will not be an “obstruction” and will be open to boats sailing downwind.
- 10.4 Boats that have finished shall immediately sail to the right of the finish line and stay clear of all other boats that are still racing.
- 11 CHANGE OF THE NEXT LEG OF THE COURSE**
To change the next leg of the course, the race committee will place a new mark (or move the finishing line) and remove the original mark as soon as practicable. When in a subsequent change, a new mark will be replaced by an original mark. This changes rule 33.
- 12 PENALTY SYSTEM**
The penalty system described in rule 44.1 and 44.2 is changed so that only one-turn, including one tack and one jibe is required. This changes rule 44.1.
- 13 PROTESTS AND REQUESTS FOR REDRESS**
Green Fleet is not scored. Protests are teaching opportunities. An open discussion of the protest process (mock protest) will be held if resources are available. All competitors, parents and coaches are encouraged to attend and observe.
- 14 SCORING**
Green Fleet is not scored. All participants receive participation medals. While placement and progress may be tracked, scores are less important than learning, improving, and having fun along the way.
- 15 COACHING**
Coaching is encouraged by the race committee. Coaching should focus on the bottom half of the fleet. Coaching on the water is for all, and all coaches are required to assist all sailors. All coaches are required to prominently display their coach flag and to have VHF radios on and operating on the Green Fleet race committee channel at all times while racing is underway. The race committee has the right to remove from the Green Fleet course any coach who disregards the instructions of the race committee.
- 16 SAFETY**
- 16.1 Every sailor must wear a non-inflatable U.S. Coast Guard approved lifejacket. Lifejackets must be fully secured (zipped, clipped and strapped) at all times on the water, except for brief periods for the removal or adding of clothing.
- 16.2 Competitors are responsible to make sure their boats are safe and /or properly rigged.
- 16.4 Competitors must check-out on land before leaving the dock and check-in when returning to land. Check in/out shall be done with event staff.
- 16.5 An adult (parent, guardian or designated adult) is responsible for the safety of their sailor. It is the responsibility solely of this adult to decide if the sailor should sail in the weather and sea conditions that might arise during the event. The adults supervising the competitors are ultimately responsible for the risks.
- 16.6 Parents not personally attending any part of the event shall ensure that another adult is authorized and designated to make these decisions for their sailor, and each competitor shall indicate in writing the parent or adult representative that will be responsible for the competitor throughout the event.
- 16.7 The designated adult shall accept full responsibility for all actions of the competitor during any activity related to the event. This includes on-shore activities before, during, and after the regatta.
- 16.8 Each boat shall have a secure loop tied at the end of its painter line.
- 16.9 Any sailor retiring from a race must notify a race committee boat or safety boat before leaving the course.

Course 1



Course 2

